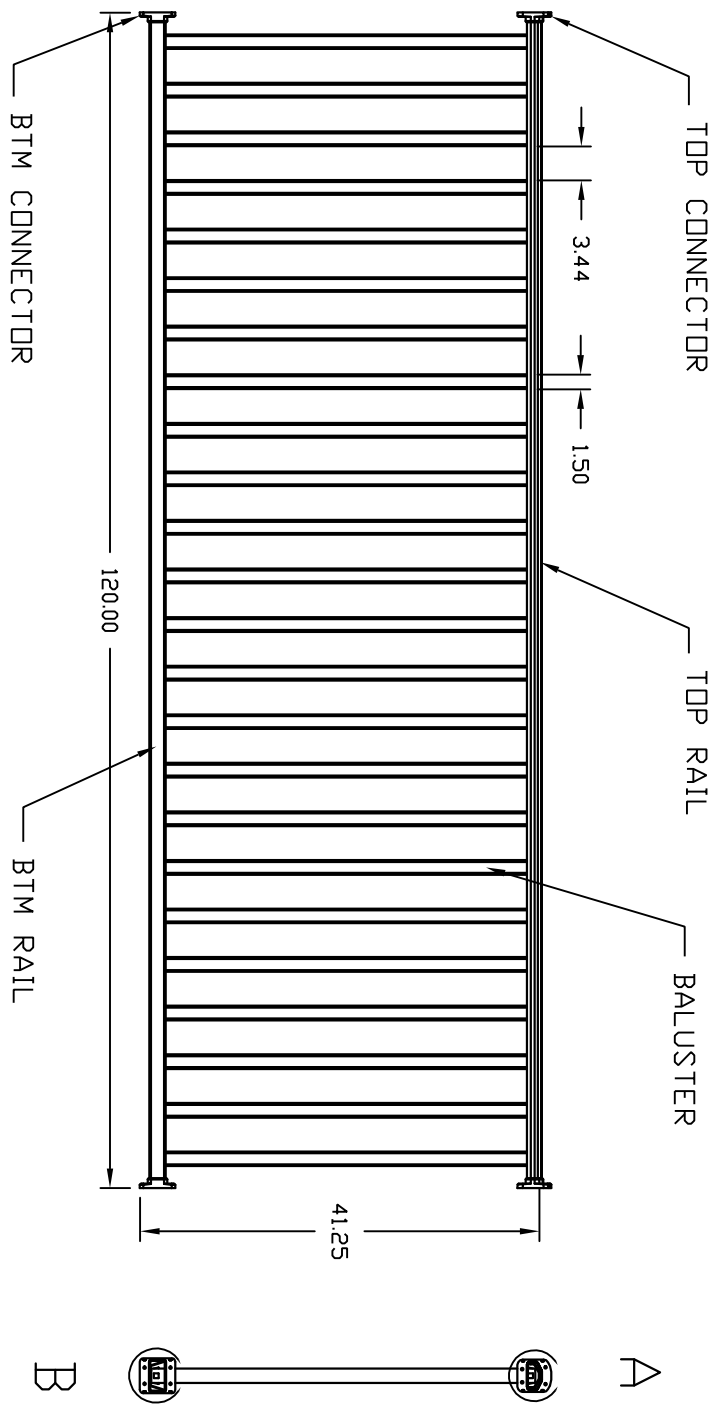


10' 42", CLASSIC RAIL ASSEMBLY, MOUNTED BETWEEN FIXED POINTS

ECL	DATE	DESCRIPTION
0		RELEASE

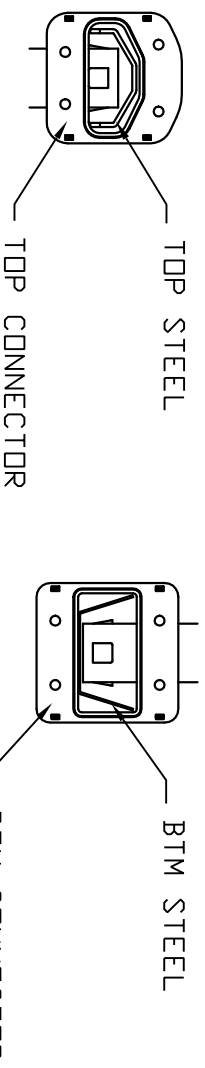
CONNECTORS & ADAPTERS:

- LINE CONNECTORS:
ROWB2 (TOP AND BTM)
- 22 $\frac{1}{2}$ ° ANGLE ADAPTER:
A0AL1
- 45° ANGLE ADAPTER:
A0AL2
- 6in. ROUND ADAPTER:
A0AL3
- ROWB2 (TOP AND BTM)



VIEW A

VIEW B



DAUGHTER PARTS:

SISTER PARTS:

PARENT PART:

PROJECT: RAIL ASSEMBLIES

PART NAME: 10' 42", ASSEMBLY

PART NUMBER:

PART WEIGHT:

PART VOLUME:

GENERAL LENGTH:

SHORT NAME:

TOLERANCES UNLESS OTHERWISE NOTED

MATERIAL:

GENERAL RADIUS:

GENERAL DRAFT:

REFER TO ORIGINAL ELECTRONIC PART FILE

SCALE: C

GENERAL WALL STOCK:

DRAWING FILE NAME:

CONFIDENTIAL: NOT TO BE DISCLOSED OR REPRODUCED WITHOUT WRITTEN PERMISSION OF GSW HERMOPLASTICS

SHEET NAME:

ENGINEERING CHANGE LEVEL:

DO NOT MODIFY DRAWING

UNLESS OTHERWISE NOTED

SHEET NUMBER:

DATE:

PRINT DATE:



GSW BUILDING PRODUCTS

DRAWN BY: CARL ROBB

DATE: 11-APR-02

PRINT DATE: 12-APR-02

NOTES: