



# Kick-Out Diverter

A water management strategy for Sloped Roofs that Meet Vertical Walls

## Features

- Molded from durable industry-approved polypropylene copolymers with UV and heat stabilizer
- Creates downward and outward water flow



"... suggests a diverter be installed as the bottom step flashing. A diverter directs water away from a wall covering and off a roof."

... Joan P. Crowe, AIA  
Excerpt from *PROFESSIONAL ROOFING MAGAZINE*, September 2001 edition

## Moisture Protection Products



## Benefits

- Installs easily and works with all leading roofing and wall cladding systems
- Helps prevent water intrusion at roof-to-wall intersections

### Part Numbers

KOLB	Left Brown
KOLG	Left Grey
KOLT	Left Tan
KOLW	Left White
KOLCP	Left Copper
KORB	Right Brown
KORG	Right Grey
KORT	Right Tan
KORW	Right White
KORCP	Right Copper

Poly: 30 pcs/box, 480/skid  
Copper: 5 pcs/box, 80/skid



**Copper Diverter formed from 16 oz. copper in accordance with industry standards**

Colors are mechanically reproduced and may vary from actual product. Consult distributor for color availability and samples.

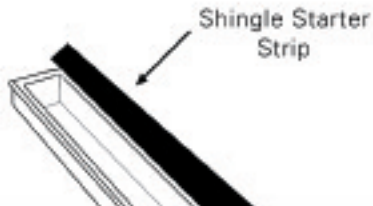
# Installation Guidelines

## STEP #1: Install Metal Drip Edge



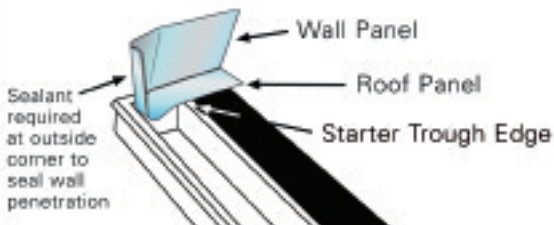
Prepare roof sheeting with Pro-Master RoofShield UDL™ underlayment and install drip edge per roof covering manufacturer's instructions.

## STEP #2: Install Shingle Starter Strip



Install the shingle starter strip per roof covering manufacturer's instructions.

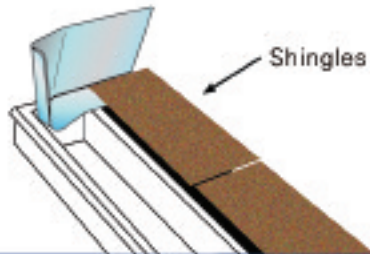
## STEP #3: Install Kick-Out Flashing



Install kick-out flashing as first piece of step flashing. Slide diverter up roof plane until starter trough stops at shingle starter strip (roof panel must be flat on roof and wall panel flush to wall). Attach the kick-out diverter ***to roof only*** at uppermost edge (at the point marked with "L" or "R"). Use one appropriate roofing nail. Apply sealant at exterior wall penetration per wall manufacturer's requirements.

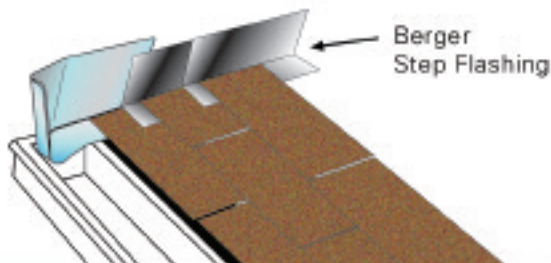
*Consult roofing manufacturer's Shingle-to-Flashing abutment.  
Consult wall manufacturer's Counter Flashing recommendations.*

#### STEP #4: Apply Roof Shingles



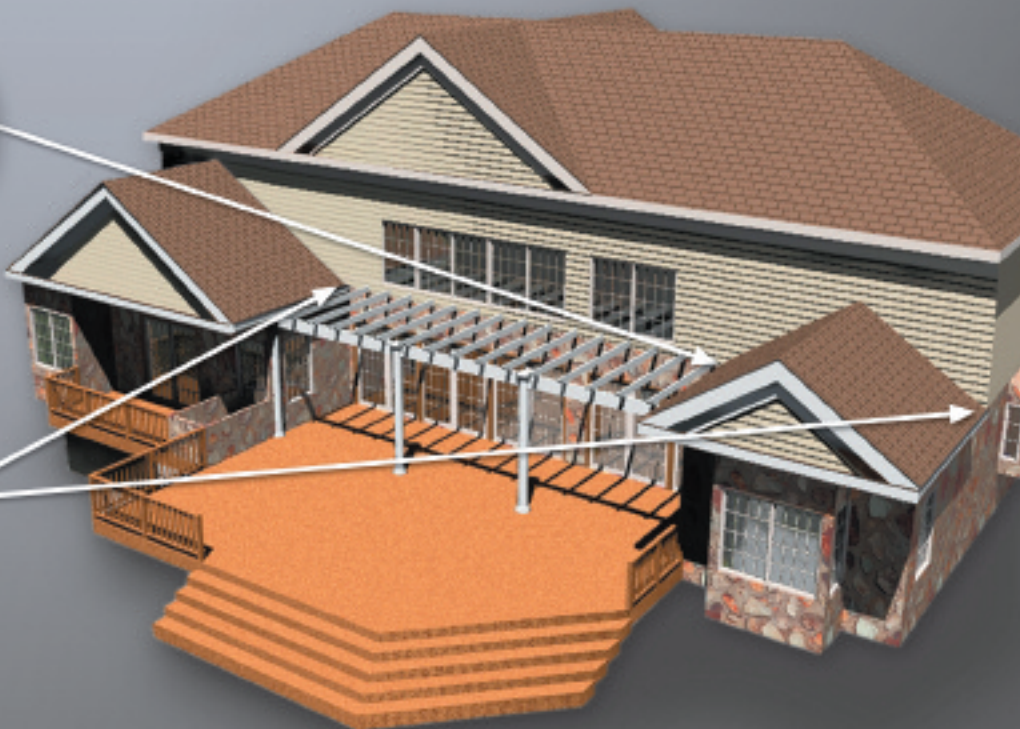
Apply roof shingles per the manufacturer's installation procedures.

#### STEP #5: Install Step Flashing



Install step flashing compatible and appropriate for the roofing application.

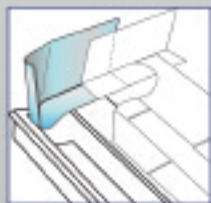
*Protect a homeowner's investment by designing their home to stay dry. Install the Kick-Out Diverter, a water management strategy that works.*



***Consistent, Quality Approach to Resolving Moisture Penetration***

## Diverter Installation

Installing Kick-Out Diverters eliminate field fabrication and provide a consistent, reliable, long life design. It can be easily trimmed to wall manufacturer's specifications.



Apply diverters with side panel against wall and have step flashing panel flat on roof. Slide upwards until trough stops at starter strip shingle, leaving step flashing panel flat on roof. Adjust per shingle manufacturer's shingle-to-flashing abutment.

See roofing manufacturer's specifications for placement of first piece of flashing. See wall manufacturer's specifications on counter flashing.

Euramax Canada manufactures a wide variety of drip edge profiles and step flashing in aluminum, steel and copper.

*Designing roofs to prevent moisture infiltration is a builder's first line of defense in water management . . .*



Water damage

*Kick-Out  
Diverters  
can help you do just that . . .*



"Other compatible materials with appropriate expected service lives, such as polypropylene copolymers, may be used."

. . . Excerpt from *PROFESSIONAL ROOFING MAGAZINE*, Manual Elements, May 2005



26 Lorena Street  
Barrie, Ontario L4N 4P4  
800-461-5706 • 705.728.7141  
Fax: 705.728.8711  
[www.euramaxcanada.com](http://www.euramaxcanada.com)

© 2009 Euramax Canada, Inc.

© 2009 Euramax Canada, Inc.